

MIAMI INTERNATIONAL AIRPORT



PASSENGER
HUB2023

GATEWAY TO THE AMERICAS



PASSENGER HUB 2023



MIAMI SERVES A LARGE AND DIVERSE TRAVEL MARKET

GREATER MIAMI OFFERS:

- Close proximity to the Florida Keys and all of the Orlando area tourist attractions
- Renowned beaches and world class attractions

MIA 2022 STATISTICS



26.5 MILLION

Miami visitors in 2022



5.8 MILLION

International visitors in 2022



12.8 MILLION

Domestic visitors in 2022



7.9 MILLION

Florida resident visitors in 2022

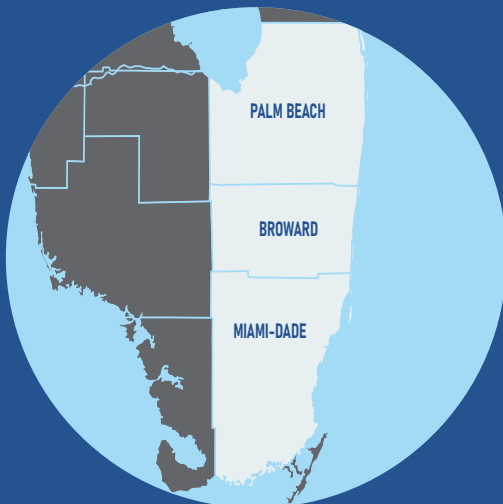


OVER 97%

Arriving cruise passengers at MIA using Port Miami

50.7 MILLION

- Second leading international gateway to the USA.
- Largest gateway to Latin America/ Caribbean region with over 1,000 weekly departures to 77 destinations in the region.
- MIA is Florida's leading International gateway, handling 60% of Florida's total International Passenger traffic.



6.1 MILLION Metropolitan Residents

- 1 of the top 10 largest metropolitan areas in the U.S.
- Miami-Dade County accounts for almost half of the population of South Florida.

\$73.9 BILLION

- MIA's 2022 Air Trade Value for imports / exports.



MIAMI BUSINESS MARKETS

- Hemispheric center for commerce in the Americas.
- Extensive business infrastructure and a multicultural, multilingual population.



OVER 1,000

- Multinational Corporations in the Miami/South Florida area.

SECOND LARGEST CONSULAR CORPS IN THE USA

- 71 Consulates
- 29 Bi-national Chambers of Commerce
- 10 Foreign Trade Offices
- Over 60 International Banks

NEW AIRLINES & ROUTES



French Bee
Paris (Orly) France



Sky High
Santo Domingo,
Dominican Republic



Volaris El Salvador
San Salvador,
El Salvador



Air Canada
Vancouver, Canada

AIR SERVICE INCENTIVES TO AIRLINES

The MIA incentive program, **ASIP7**, offers landing fee and other benefits to passenger and cargo carriers in various broad and narrower arrangements according to the desired services being sought by MIA.

A brochure containing all details, benefits and qualifications is offered online at: www.iflyMIA.com

Inquiries regarding new air service development and incentives may be made to: marketing@flyMIA.com

IMPROVING THE PASSENGER EXPERIENCE WITH TECHNOLOGY

Miami International Airport is using the latest technological advancements to make entering the United States quicker and easier. These automated solutions help travelers expedite the entry process.



BIOMETRIC FACIAL RECOGNITION: INBOUND PASSENGERS

- Verifies a traveler's identity by matching their facial image to the passport they are presenting.
- Decreased processing times by as much as 80% while maintaining 99% accuracy.
- Offered in the Central Terminal, through Customs and Border Protection.



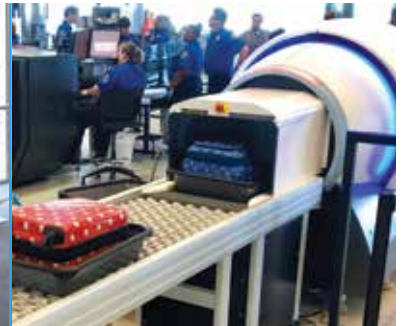
BIOMETRIC FACIAL RECOGNITION: OUTBOUND PASSENGERS

- Allows passengers to board with a quick click of a camera instead of a boarding pass or passport.
- Currently offered at select gates in the South Terminal.



GLOBAL ENTRY

- Allows for expedited clearance for pre-approved, low-risk travelers upon arrival in the United States.
- MIA has 12 automated Global Entry kiosks; 7 in the North Terminal, 3 in the South Terminal and 2 in the Central Terminal.



TSA CHECKPOINT 3-D SCANNING

- The new technology provides improved explosives detection capabilities at the checkpoint.



MODERNIZING & TRANSFORMING MIA FOR THE FUTURE

CONCOURSE “F” MODERNIZATION & CENTRAL TERMINAL REDEVELOPMENT

- Create new consolidated checkpoint with raised roof and natural light, equipped with advanced screening lanes
- Enhance airline ticket counters with increased queue space and raised ceilings
- Expand holdrooms with concessions

REDEVELOPMENT OF NORTH TERMINAL REGIONAL COMMUTER FACILITY

- Provide adequate holdroom space & improve the passenger experience
- Improve parking layout to serve additional and larger aircraft

SOUTH TERMINAL APRON AND GATE EXPANSION

- Provide 6 domestic narrow body aircraft gates
- Improve passenger experience with additional post-security concessions space

NEW HOTEL DEVELOPMENT

- Build a new on-airport hotel with direct access to the terminal area



New Commuter Gates



Enhanced Check-in Experience



New On-Airport Hotel

MIAMI-DADE COUNTY

Daniella Levine Cava
Mayor



BOARD OF COUNTY COMMISSIONERS

Oliver G. Gilbert, III
Chairman

Anthony Rodriguez
Vice Chairman

Oliver G. Gilbert, III
District 1

Marleine Bastien
District 2

Keon Hardemon
District 3

Micky Steinberg
District 4

Eileen Higgins
District 5

Kevin M. Cabrera
District 6

Raquel A. Regalado
District 7

Danielle Cohen Higgins
District 8

Kionne L. McGhee
District 9

Anthony Rodriguez
District 10

Roberto J. Gonzalez
District 11

Juan Carlos Bermudez
District 12

René Garcia
District 13

Juan Fernandez-Barquin
Clerk of the Court and
Comptroller

Pedro J. Garcia
Property Appraiser

Geri Bonzon-Keenan
County Attorney

Ralph Cutié
Aviation Director
& Chief Executive Officer

Miami-Dade County provides equal access and equal opportunity in employment and services and does not discriminate on the basis of disability. "It is the policy of Miami-Dade County to comply with all of the requirements of the Americans with Disabilities Act."



America's Global Gateway
iflyMIA.com • marketing@flyMIA.com
 iflyMIA